
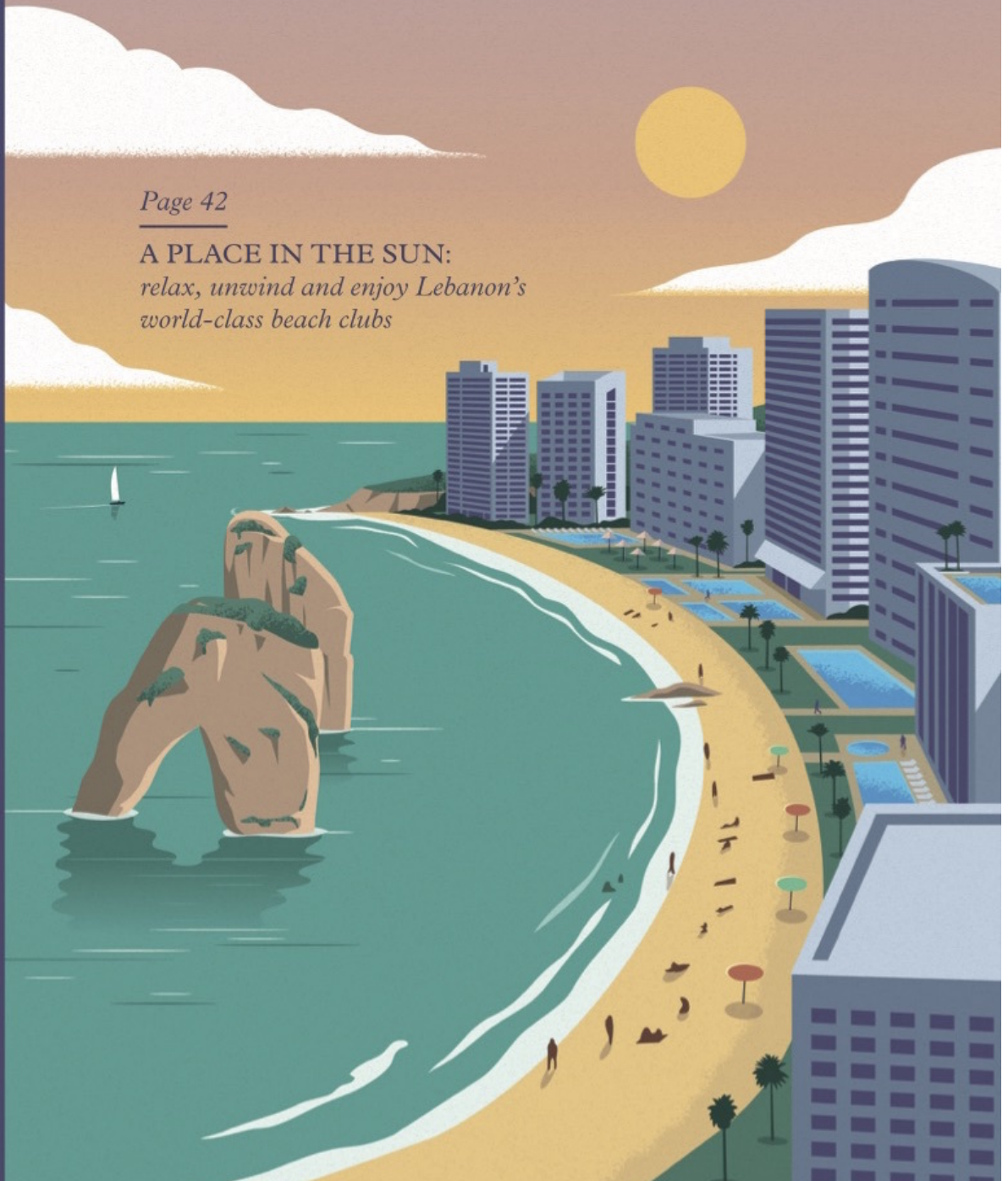


SHOP

 Global Blue

Page 42

A PLACE IN THE SUN:
*relax, unwind and enjoy Lebanon's
world-class beach clubs*



CHECK OUT



TRADITIONAL ELEGANCE

Inspired by the traditional craft of chair caning, Nada Ghazal has created a jewellery collection that pays tribute to the long history of Lebanese workmanship. The square rings, available in yellow and rose gold, are encrusted with champagne diamonds and were created for Beirut's

Sursock Museum to mark an event dedicated to Lebanese cultural sustainability. Nada Ghazal, the founder and creative director of the Nada G brand, is often inspired by her family, and used her memories of the Khaizaran chairs in her family home while creating this collection. The ancient craft of chair caning is part of Lebanon's rich history and identity and the jeweller hopes to trigger

memories for others with her collection of rings, bracelets, cuffs and cufflinks. Nada G was founded in 2004 to create timeless fine jewellery using intricately crafted 18-carat gold and precious and semi-precious stones. *FM*
Nada G Khaizaran rings, price on request, Nada G, Beirut Souks, Beirut Central District, +961 (0)1 983443, nadag.com
★ FOR MAP GO TO PAGE 73

PHOTO: BERNARD KHALIL